



# KLEIN CREEK STREAMBANK STABILIZATION



SECTION III  
Mitchell Lakes to Illini Drive (IEPA 319)

## PRESENTATION SCHEDULE

- Meeting #1: Section I (A&B) – November 1, 2021
- **Meeting #2: Section III – November 15, 2021**
- Meeting #3: Sections II, IV, Mitchell Lakes & Kehoe Blvd – December 6, 2021
  - *Includes Summary of Impacted Properties (All Sections)*
- Public Open House (Section I & III): TBD

### Section I-A (FY23)

Kuhn Rd to WRC Outfall

### Section I-B (FY23)

WRC Outfall to Thunderbird Trl

### Section II (FY26)

Thunderbird Trl to Illini Dr

### Section III (FY24)

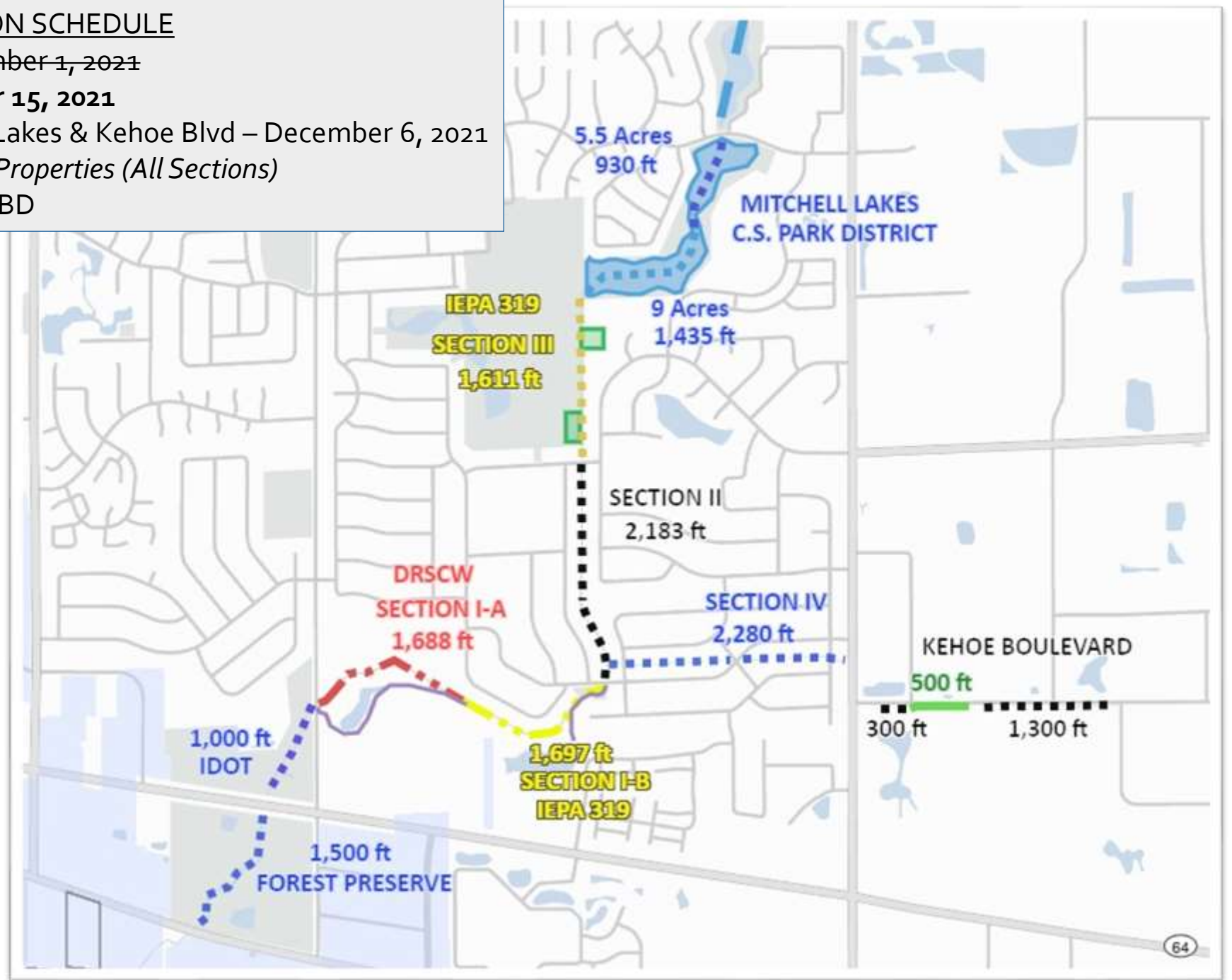
Illini Dr to Mitchell Lakes

### Section IV (FY26)

Klein Creek to Gary Ave

### Kehoe Blvd – Section I **(Complete)**

Kehoe Blvd – Section II (FY25)  
County Reservoir to Railroad Spur



Armstrong Park

Mitchell Lakes

Mitchell Lakes Outfall

Bluff Drive

Lower Basin IN-flow

Pump Station Into Upper Basin

Floodplain Compensatory Storage

Armstrong Park Flood Control Reservoir Upper & Lower Basins

Library

Hiawatha Drive

Lower Basin OUT-flow

Bluff Drive

Hiawatha Drive

Siphon to Klein Creek @ Kuhn Road

Jay Stream Pond

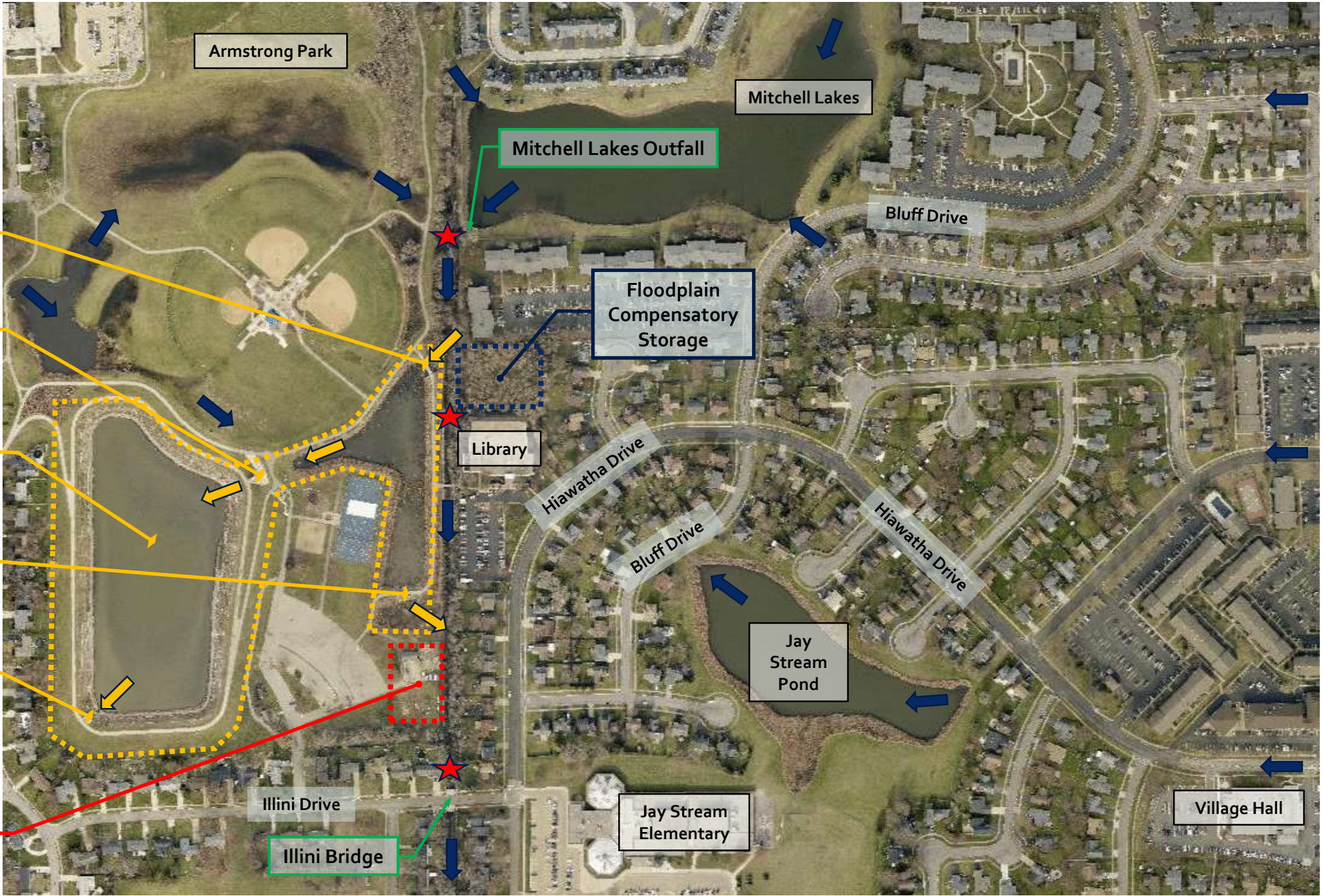
Park District Maintenance Shed & Yard

Illini Drive

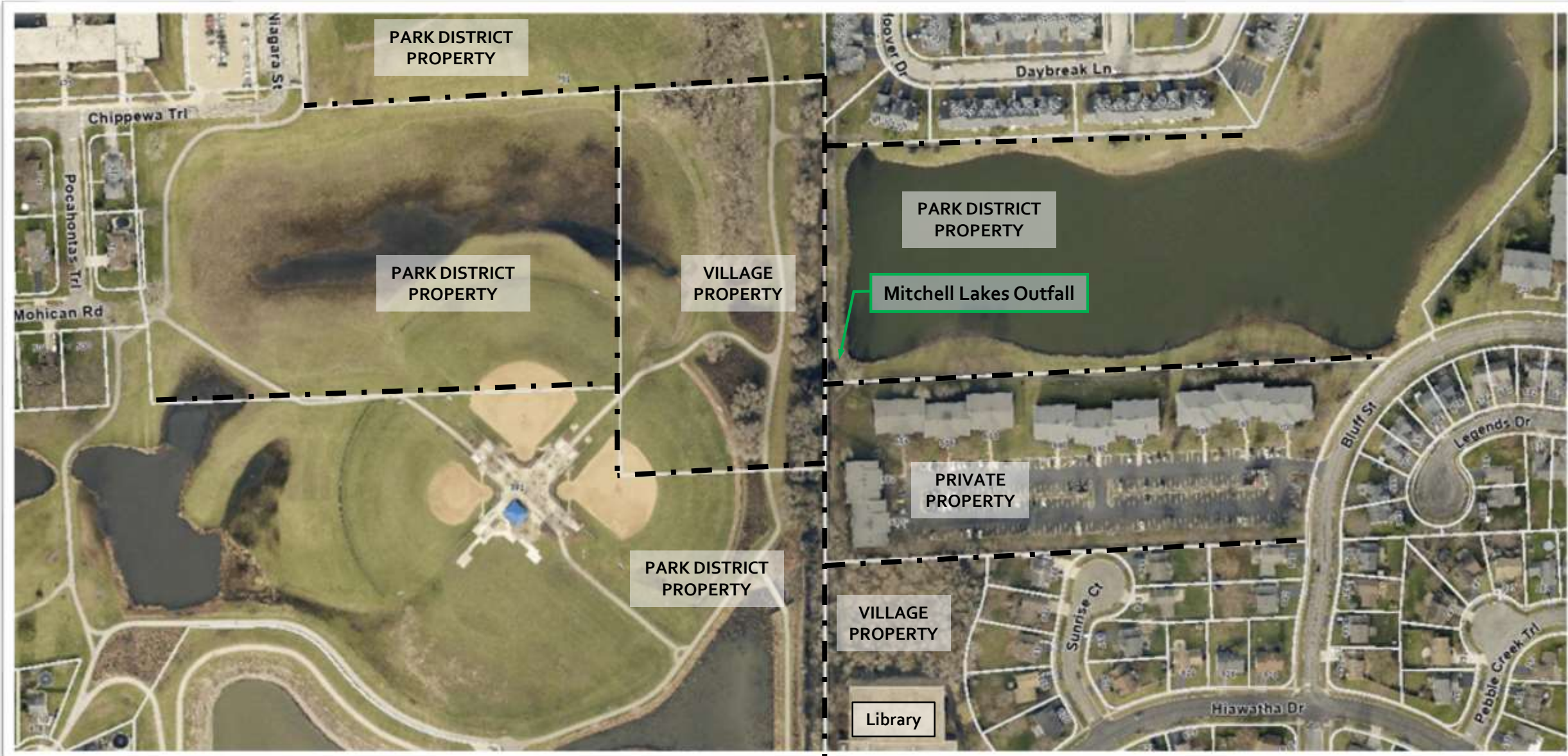
Jay Stream Elementary

Village Hall

Illini Bridge

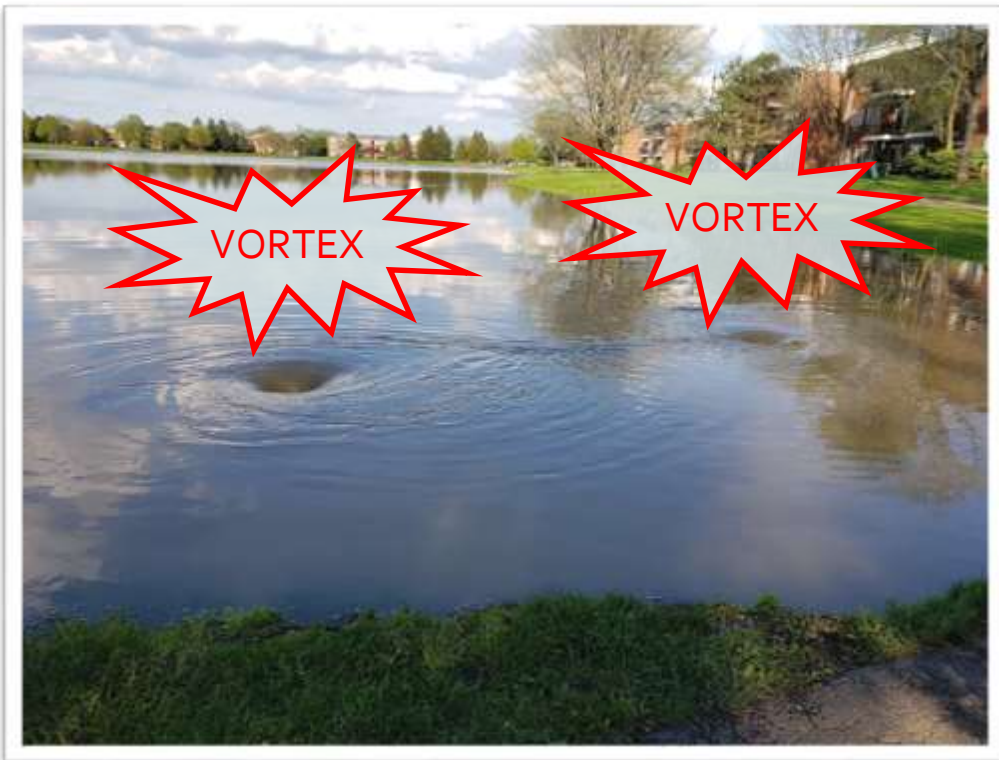


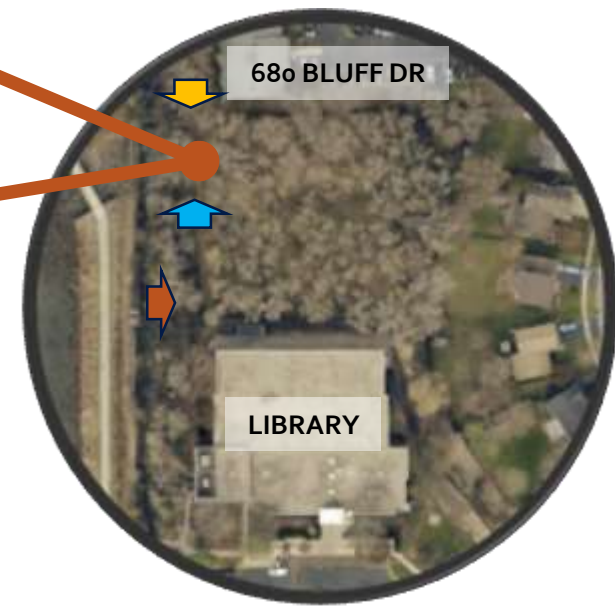
# PROPERTY OWNERSHIP – NORTH END OF SECTION III



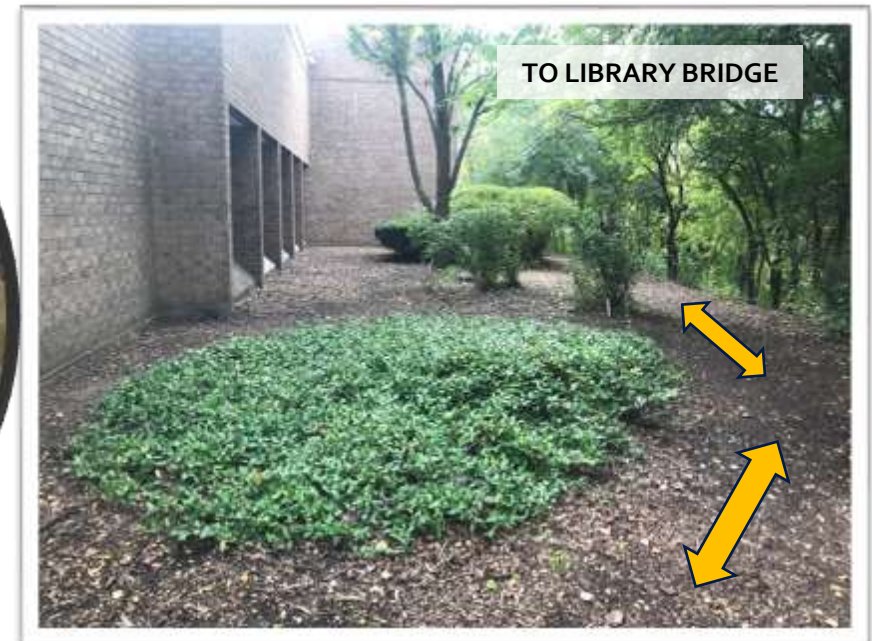
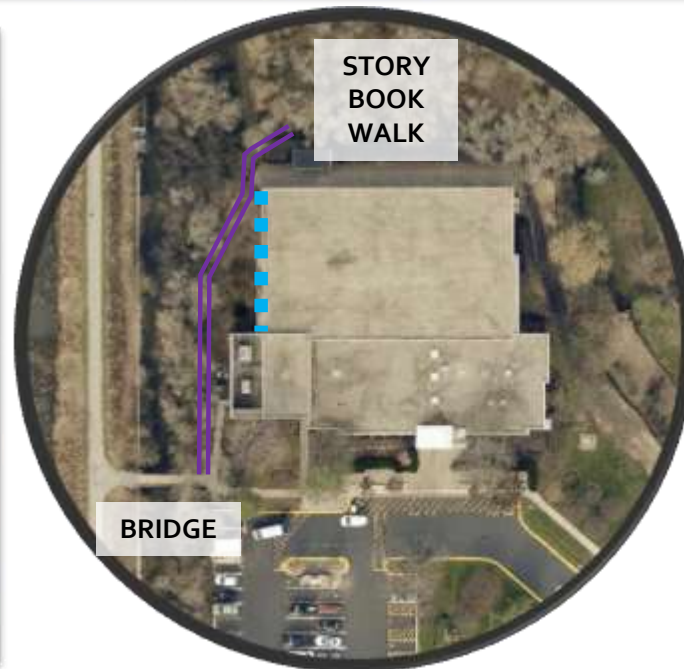
# MITCHELL LAKES OUTFALL

RAIN EVENT  
MAY 15, 2020



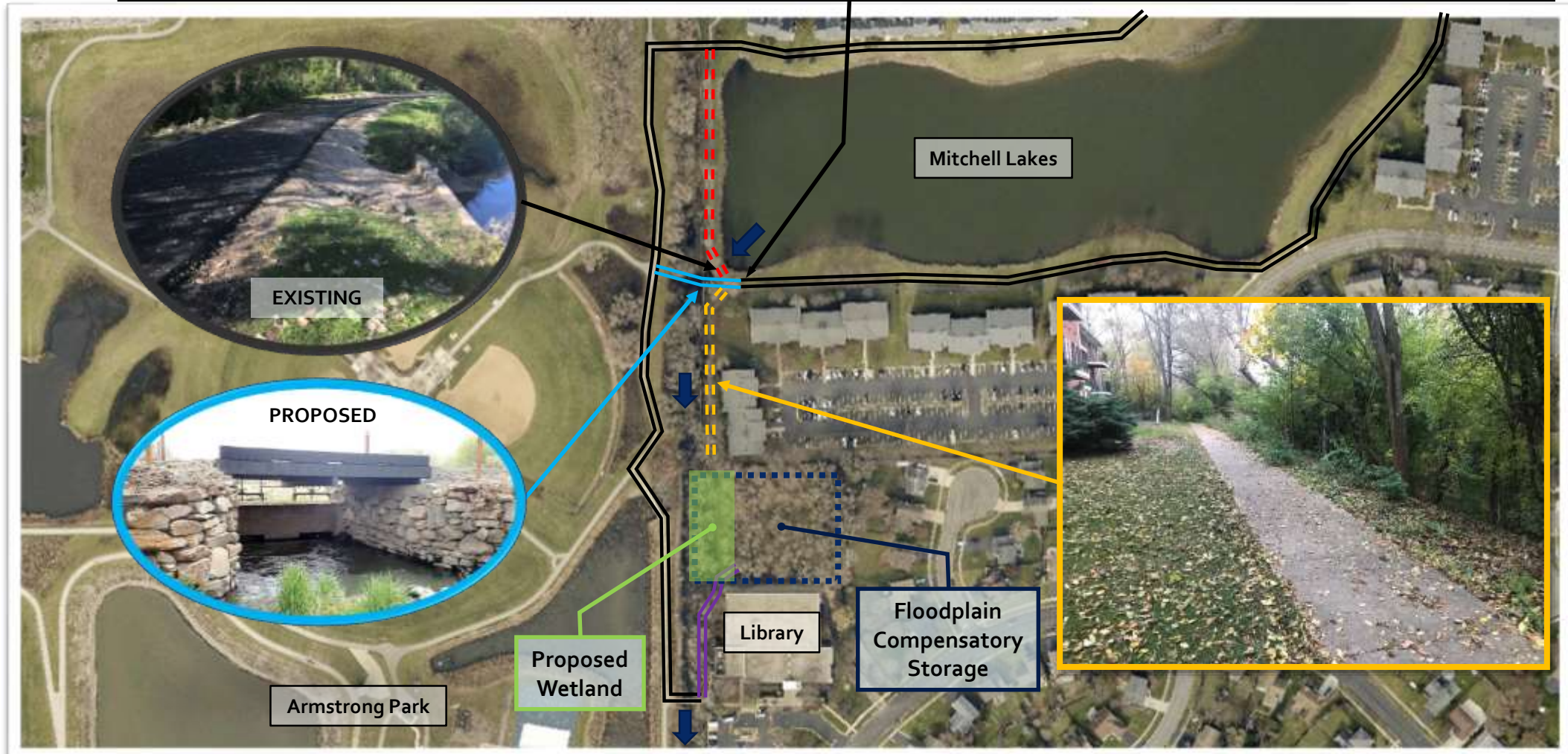


# SIDEWALK & EDUCATIONAL DISPLAY – WEST SIDE OF LIBRARY



# RECREATIONAL TRAIL – FUTURE EXTENSIONS & IMPROVEMENTS

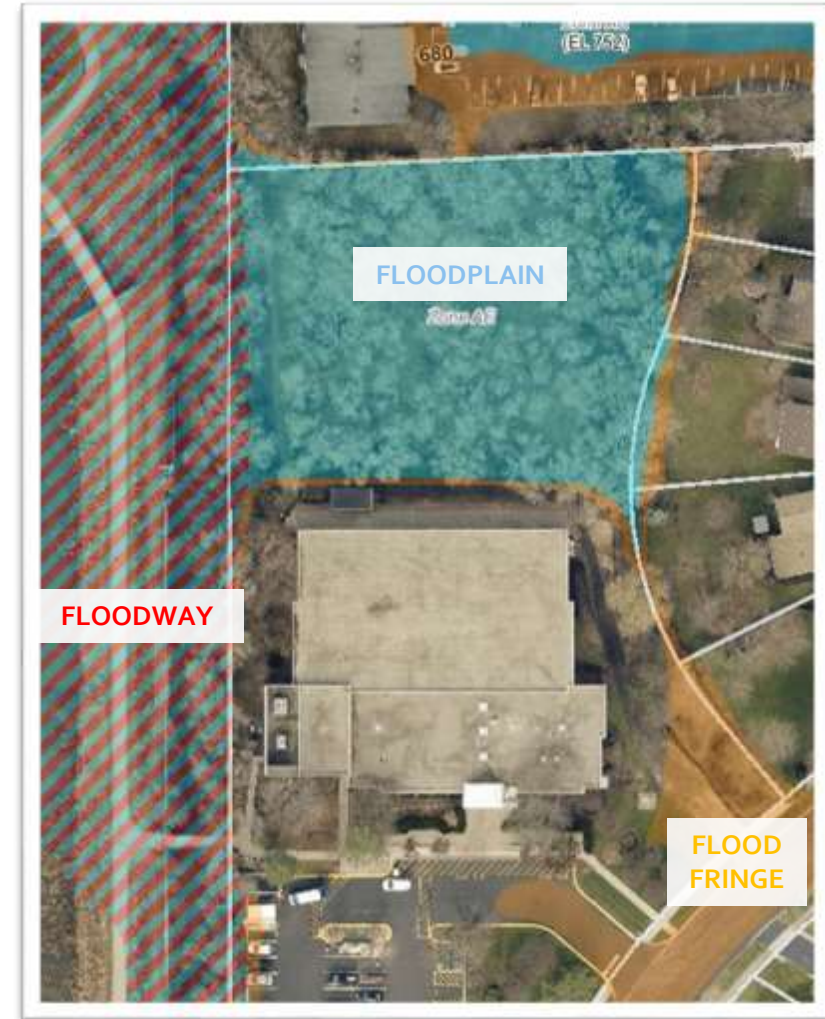
1. Existing trail to remain.
2. Contractor to replace existing culverts with a pedestrian-style bridge that also allows for fish-passage.
3. Contractor to remove the existing sidewalk (requires agreement with private property owner).
4. Contractor to install sidewalk from library bridge to story book walk.
5. Trail would eventually be removed if the Mitchell Lakes shoreline is shifted to the west.





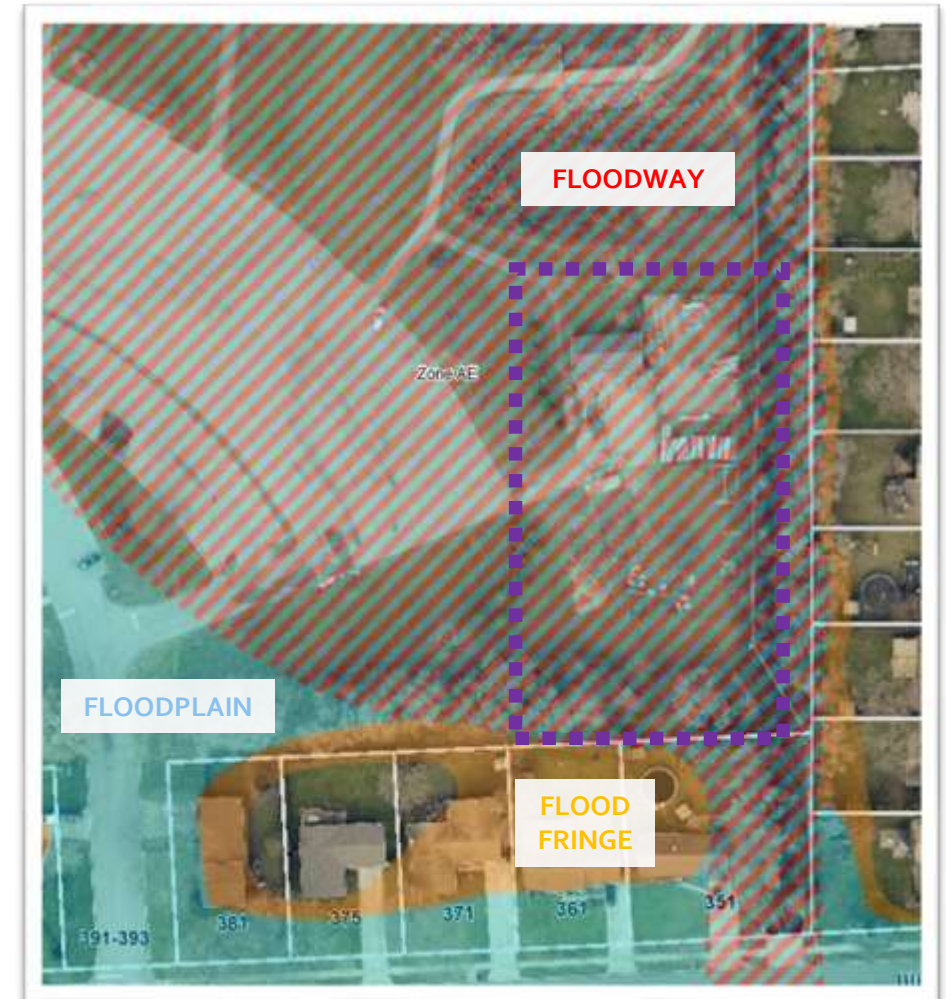
## WETLAND CREATION – NORTH OF LIBRARY

- The area north of the library serves as compensatory floodplain storage in order to build the library above the floodplain. The library has been restoring this area, including the installation of a gravel path with the intent of creating a “story book walk”.
- Contractor to create ~0.3 Acres of wetland (per IEPA IGGA “Outputs”).



# WETLAND CREATION - PARK DISTRICT MAINTENANCE SHED & OUTDOOR STORAGE AREA

- Park District's maintenance shed and outdoor storage area is not an appropriate use of the floodway / floodplain. Park District has voluntarily relocated most of their stored items elsewhere and has also built a maintenance facility at 280 Kuhn Road.
1. Contractor to create ~0.8 Acres of wetland (per IEPA IGGA "Outputs").
  2. Village and Park District to coordinate on relocation of maintenance shed.



# RETAINING WALL – NORTH OF ILLINI DRIVE



# SCHEDULE PER IEPA AGREEMENT

## EXHIBIT B

### DELIVERABLES OR MILESTONES

IEPA staff will review the design plans for general conformance with the IGGA "Outputs".  
**Consultant on schedule.**

**Temporary easements only!**

Staff will continue working on a concept with the library, but we will also submit the "typical" educational signage.



<u>Description</u>	<u>Completion Date</u>
<b>PROJECT COORDINATION</b>	
1. Project Coordination	July 30, 2023
<b>BEST MANAGEMENT PRACTICE (BMP) IMPLEMENTATION</b>	
2. BMP Documentation Form (Part 1) and Design	December 31, 2021
O&M Plan	December 31, 2021
Sign Design	December 31, 2021
Draft Landowner Agreement	December 31, 2021
Final Landowner Agreement	January 31, 2022
Complete Implementation of BMPs	July 15, 2023
BMP Documentation Form (Part 2) w/Invoices and Photo Documentation	September 1, 2023
<b>EDUCATIONAL SIGN AND WEBSITE INFORMATION</b>	
3. Draft Sign Design	December 31, 2021
Final Sign Design	March 31, 2022
Install Signs	May 30, 2023
<b>PROJECT REPORT</b>	
4. Draft Project Report	July 15, 2023
Final Project Report	August 30, 2023
<b>OTHER DIRECTED ACTIVITIES</b>	
Periodic Performance and Financial Reports	Quarterly as stipulated